

VIBRATOR TYPE: MTF 3/1100E-S90 230/400 VOLTS THREE PHASES 50 Hz

ACBMV B. CASADIO VIBRATION
 Z.I. Mi-Plaine
 51 Rue Ampère
 B.P. 31
 69682 CHASSIEU CEDEX (FRANCE)
 Tel.: 04 78 90 87 87 / Fax.: 04 78 90 87 88
 Email: vibrateur@orange.fr
 Internet: acbmv.com

2 POLES - 3000 RPM ATEX II 2G,D - Classe Ex e II T4/T3 tD A21 IP 66 ZONE 1-2 / 21-22
 REF.: 6E0285A Gas T°=-T4 Dust T°=120°C
 SIZE: 40

Certifications:



MECHANICAL AND ELECTRICAL SPECIFICATIONS

Eccentric weight setup (%)	Centrifugal force weight up/down (kg)	Static moment weight	Centrifugal force weight up/down (kN)	Static moment weight up (kgmm)	Estimated bearings life time (hours)
100	590/590	58,6	5,79/5,79	58,6	10000
90	531/531	52,74	5,21/5,21	52,74	14208
80	472/472	46,88	4,63/4,63	46,88	21039
70	413/413	41,02	4,05/4,05	41,02	32835
60	354/354	35,16	3,47/3,47	35,16	54890
50	295/295	29,30	2,90/2,90	29,30	>100000
40	236/236	23,44	2,32/2,32	23,44	>100000
30	177/177	17,58	1,74/1,74	17,58	>100000
20	118/118	11,72	1,16/1,16	11,72	>100000
10	59/59	5,86	0,58/0,58	5,86	>100000

Power supply (volts)	400
Phases:	three phases
Frequency (Hz)	50 Hz
Rotation speed (RPM)	3000
Max input power (watt)	Input: T3=830 T4=- Rating: T3=660 T4=-
Max current (amp)	T3=1,43 T4=-
IS/IR	T3=7,3 T4=-

DIMENSIONAL SPECIFICATIONS (mm)

Vibrator weight: 26 kg

Continual service ambient temperature: -20°C à +40°C - Tropicalization anti-mold - Mechanical protection: IP66 IK08 according to IEC

Bearing type: ROLLER

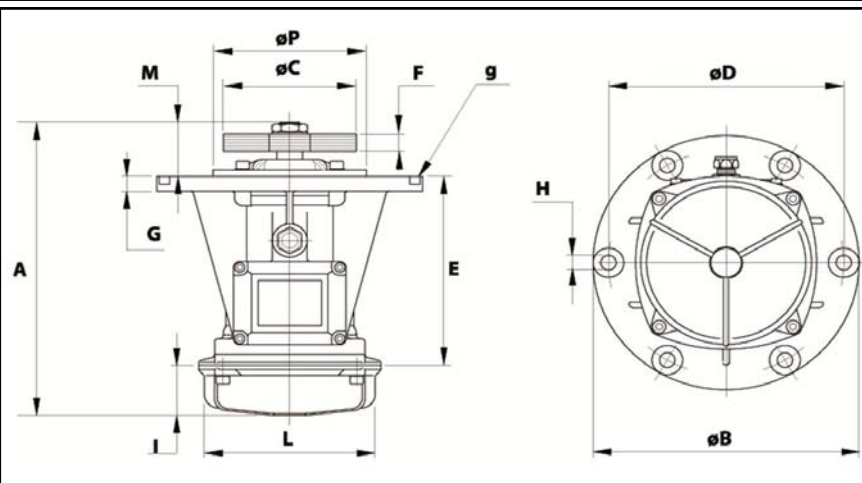
Lubrication LONG-LIFE with KLUEBER ISOFLEX NBU 15.

Re lubrication quantity after 1000 hours of using: 16g

Max quantity by replaced bearing: 9g

Fixing with 4 screws M12 - 1/2" quality 8.8 with tightening torque (kgm - ft/lb): 8 - 58

Power supply cable size: 9 à 16 mm - Cable entry thread: M25x1,5



A	383
B	279
C	145
D	254
H	14
N° TROUS	4
E	-
F	31 (50Hz) 21 (60Hz)
G	17,5
I	57,5
L	-
M	63
P	229