

## VIBRATOR TYPE: MTF 3/1100E-S90 260/460 VOLTS THREE PHASES 60 Hz

ACBMV B. CASADIO VIBRATION  
 Z.I. Mi-Plaine  
 51 Rue Ampère  
 B.P. 31  
 69682 CHASSIEU CEDEX (FRANCE)  
 Tel.: 04 78 90 87 87 / Fax.: 04 78 90 87 88  
 Email: [vibrateur@orange.fr](mailto:vibrateur@orange.fr)  
 Internet: [acbm.com](http://acbm.com)

2 POLES - 3600 RPM      ATEX II 2G,D - Classe Ex e II T4/T3 tD A21 IP 66 ZONE 1-2 / 21-22  
 REF.: 6E0285C      Gas T°=-T4 Dust T°=120°C  
 SIZE: 40

Certifications:



### MECHANICAL AND ELECTRICAL SPECIFICATIONS

| Eccentric weight setup (%) | Centrifugal force weight up/down (kg) | Static moment weight | Centrifugal force weight up/down (kN) | Static moment weight up (kgmm) | Estimated bearings life time (hours) |
|----------------------------|---------------------------------------|----------------------|---------------------------------------|--------------------------------|--------------------------------------|
| 100                        | 566/566                               | 39                   | 5,55/5,55                             | 39                             | 9500                                 |
| 90                         | 509,4/509,4                           | 35,10                | 5,00/5,00                             | 35,10                          | 13497                                |
| 80                         | 452,8/452,8                           | 31,20                | 4,44/4,44                             | 31,20                          | 19987                                |
| 70                         | 396,2/396,2                           | 27,30                | 3,89/3,89                             | 27,30                          | 31193                                |
| 60                         | 339,6/339,6                           | 23,40                | 3,33/3,33                             | 23,40                          | 52146                                |
| 50                         | 283/283                               | 19,50                | 2,78/2,78                             | 19,50                          | 95754                                |
| 40                         | 226,4/226,4                           | 15,60                | 2,22/2,22                             | 15,60                          | >100000                              |
| 30                         | 169,8/169,8                           | 11,70                | 1,67/1,67                             | 11,70                          | >100000                              |
| 20                         | 113,2/113,2                           | 7,80                 | 1,11/1,11                             | 7,80                           | >100000                              |
| 10                         | 56,6/56,6                             | 3,90                 | 0,56/0,56                             | 3,90                           | >100000                              |

|                        |   |
|------------------------|---|
| Power supply (volts)   | 460   |
| Phases:                | three phases  |
| Frequency (Hz)         | 60 Hz   |
| Rotation speed (RPM)   | 3600  |
| Max input power (watt) | Input:<br>T3=910<br>T4=-<br>Rating:<br>T3=660<br>T4=- |
| Max current (amp)      | T3=1,25<br>T4=-                                       |
| IS/IR                  | T3=7,3<br>T4=-  |

### DIMENSIONAL SPECIFICATIONS (mm)

**Vibrator weight: 25 kg**

Continual service ambient temperature: -20°C à +40°C - Tropicalization anti-mold - Mechanical protection: IP66 IK08 according to IEC

Bearing type: ROLLER

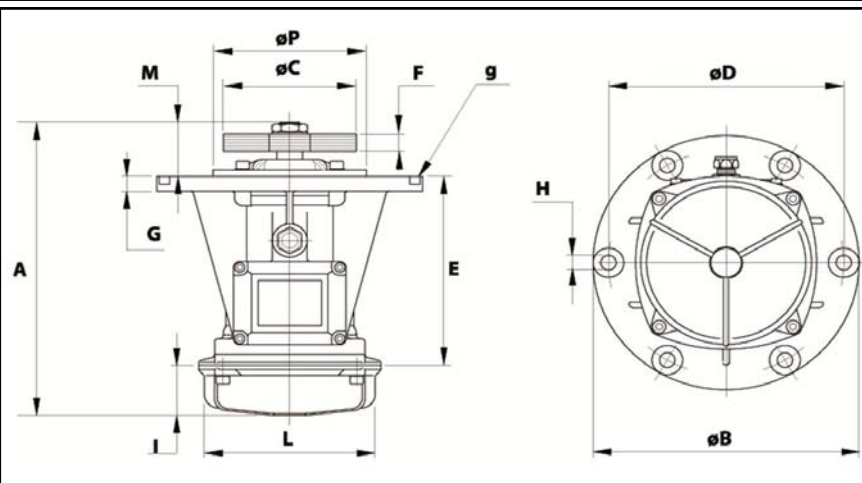
Lubrication LONG-LIFE with KLUEBER ISOFLEX NBU 15.

Re lubrication quantity after 1000 hours of using: 16g

Max quantity by replaced bearing: 9g

Fixing with 4 screws M12 - 1/2" quality 8.8 with tightening torque (kgm - ft/lb): 8 - 58

Power supply cable size: 9 à 16 mm - Cable entry thread: M25x1,5



|          |                     |
|----------|---------------------|
| A        | 383                 |
| B        | 279                 |
| C        | 145                 |
| D        | 254                 |
| H        | 14                  |
| N° TROUS | 4                   |
| E        | -                   |
| F        | 31 (50Hz) 21 (60Hz) |
| G        | 17,5                |
| I        | 57,5                |
| L        | -                   |
| M        | 63                  |
| P        | 229                 |
|          |                     |
|          |                     |
|          |                     |