

## VIBRATOR TYPE: MTF 3/650E-S02 260/460 VOLTS THREE PHASES 60 Hz

ACBMV B. CASADIO VIBRATION  
 Z.I. Mi-Plaine  
 51 Rue Ampère  
 B.P. 31  
 69682 CHASSIEU CEDEX (FRANCE)  
 Tel.: 04 78 90 87 87 / Fax.: 04 78 90 87 88  
 Email: [vibrateur@orange.fr](mailto:vibrateur@orange.fr)  
 Internet: [acbmv.com](http://acbmv.com)

2 POLES - 3600 RPM      ATEX II 2G,D - Classe Ex e II T4/T3 tD A21 IP 66 ZONE 1-2 / 21-22  
 REF.: 6E0456C      Gas T°=T3-T4 Dust T°=120°C  
 SIZE: 20

Certifications:



### MECHANICAL AND ELECTRICAL SPECIFICATIONS

Eccentric weight setup (%)	Centrifugal force weight up/down (kg)	Static moment weight	Centrifugal force weight up/down (kN)	Static moment weight up (kgmm)	Estimated bearings life time (hours)
100	377/235	0	3,70/2,31	0	3850
90	339,3/211,5	0	3,33/2,08	0,00	5281
80	301,6/188	0	2,96/1,85	0,00	7519
70	263,9/164,5	0	2,59/1,62	0,00	11224
60	226,2/141	0	2,22/1,39	0,00	17824
50	188,5/117,5	0	1,85/1,16	0,00	30800
40	150,8/94	0	1,48/0,92	0,00	60156
30	113,1/70,5	0	1,11/0,69	0,00	>100000
20	75,4/47	0	0,74/0,46	0,00	>100000
10	37,7/23,5	0	0,37/0,23	0,00	>100000

Power supply (volts)	460
Phases:	three phases
Frequency (Hz)	60 Hz
Rotation speed (RPM)	3600
Max input power (watt)	Input: T3=300 T4=360 Rating: T3=300 T4=210
Max current (amp)	T3=0,67 T4=0,5
IS/IR	T3=4,2 T4=5,6

### DIMENSIONAL SPECIFICATIONS (mm)

**Vibrator weight: 14,3 kg**

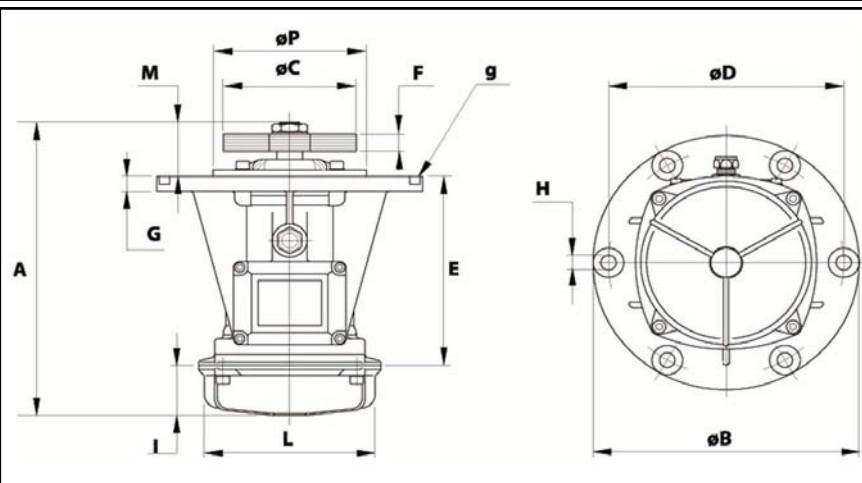
Continual service ambient temperature: -20°C à +40°C - Tropicalization anti-mold - Mechanical protection: IP66 IK08 according to IEC

Bearing type: BALL

Lubrication "FOR LIFE" with double protection screen

Fixing with 6 screws M14 - 9/16" quality 8.8 with tightening torque (kgm - ft/lb): 4.80 - 35

Power supply cable size: 9 à 16 mm - Cable entry thread: M25x1,5



A	279,5
B	245
C	150 (50Hz) 132 (60Hz)
D	205
H	12
N° TROUS	6
E	124
F	18
G	12
I	65
L	145
M	90,5
P	162