

Turbine vibrator type GT25S EX

CE EX II 2 G/D c T6 T85°C

Description:

High speed and eccentric working torques for strong vibration. Wide range.

ACBMV B. CASADIO VIBRATION

Z.I. Mi-Plaine

51 Rue Ampère

B.P. 31

69682 CHASSIEU CEDEX (FRANCE)

Tel.: 04 78 90 87 87 / Fax.: 04 78 90 87 88

Email: vibrateur@orange.fr

Internet: acbm.com

VIBRATING AND PNEUMATIC CHARACTERISTICS

| | 2 Bars/29 PSI | 4 Bars/58 PSI | 6 Bars/87 PSI |
|-------------------|---------------|---------------|---------------|
| Frequency (RPM) | 8500 | 11000 | 13000 |
| Force (N) | 2250 | 3600 | 4900 |
| Force (LBS) | 506,76 | 810,81 | 1103,60 |
| Air cons. (l/min) | 185 | 325 | 455 |
| Air cons. (CF) | 6,61 | 11,61 | 16,25 |

Typical applications:

- Bunker emptying
- Screen filter
- Vibrating tables
- Preventing adhesions in pipelines and silos
- Moving of bulk materials

Construction:

- Vibration from the centrifugal force of positive and negative unbalanced torques in the rotor.
- Rotor on two pre-lubricated and enclosed ball bearings arranged in pairs. Lubricated with special grease for long life.

Properties:

- Lubrication free
- Extremely quiet
- Strong vibration from high speeds and eccentric working torques
- Nominal frequency 8500 à 13000 RPM
- Centrifugal force 2250 – 4900 N
- Continuously variable (compressed air)
- Can be used at temperatures up to 150°C
- Resistant to extreme environmental conditions

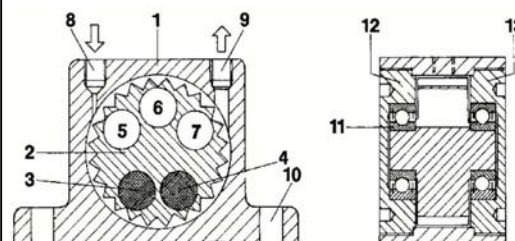
Design:

- 1 Housing made from extruded aluminium alloy
- 2 Turbine wheel made from surface-hardened aluminium
- 3-4 high-density inserts: positive torque
- 5-7 openings for achieving negative torque
- 8 Air supply
- 9 Air outlet
- 10 Base mounting bores
- 11 Pre-lubricated and enclosed ball bearings arranged in pairs

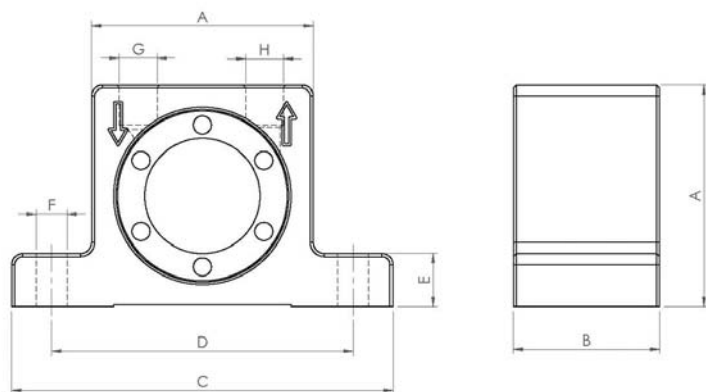
Surface-hardened aluminium end plates

12 with left-hand thread

13 with right-hand thread



DIMENSIONAL SPECIFICATIONS



| | mm | inch |
|-----------------|--------|--------|
| A | 80 | 3,15 |
| B | 56 | 2,21 |
| C | 128 | 5,04 |
| D | 104 | 4,10 |
| E | 16 | 0,63 |
| F | 9 | 0,35 |
| G | G 1/4" | G 1/4" |
| H | G 1/4" | G 1/4" |
| | | |
| | | |
| | | |
| | | |
| | kg | LBS |
| Vibrator weight | 1,2 | 2,667 |
| | | |
| | | |