

## Turbine vibrator type GT36 EX

CE EX II 2 G/D c T6 T85°C

### Description:

High speed and eccentric working torques for strong vibration. Wide range.

ACBMV B. CASADIO VIBRATION

Z.I. Mi-Plaine

51 Rue Ampère

B.P. 31

69682 CHASSIEU CEDEX (FRANCE)

Tel.: 04 78 90 87 87 / Fax.: 04 78 90 87 88

Email: [vibrateur@orange.fr](mailto:vibrateur@orange.fr)

Internet: [acbm.com](http://acbm.com)

### VIBRATING AND PNEUMATIC CHARACTERISTICS

	2 Bars/29 PSI	4 Bars/58 PSI	6 Bars/87 PSI
Frequency (RPM)	8000	10000	13000
Force (N)	3290	5360	7190
Force (LBS)	740,99	1207,21	1619,37
Air cons. (l/min)	330	530	745
Air cons. (CF)	11,79	18,93	26,61

### Typical applications:

- Bunker emptying
- Screen filter
- Vibrating tables
- Preventing adhesions in pipelines and silos
- Moving of bulk materials

### Construction:

- Vibration from the centrifugal force of positive and negative unbalanced torques in the rotor.
- Rotor on two pre-lubricated and enclosed ball bearings arranged in pairs. Lubricated with special grease for long life.

### Properties:

- Lubrication free
- Extremely quiet
- Strong vibration from high speeds and eccentric working torques
- Nominal frequency 8000 à 13000 RPM
- Centrifugal force 3290 – 7190 N
- Continuously variable (compressed air)
- Can be used at temperatures up to 150°C
- Resistant to extreme environmental conditions

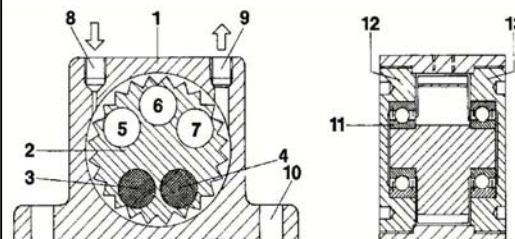
### Design:

- 1 Housing made from extruded aluminium alloy
- 2 Turbine wheel made from surface-hardened aluminium
- 3-4 high-density inserts: positive torque
- 5-7 openings for achieving negative torque
- 8 Air supply
- 9 Air outlet
- 10 Base mounting bores
- 11 Pre-lubricated and enclosed ball bearings arranged in pairs

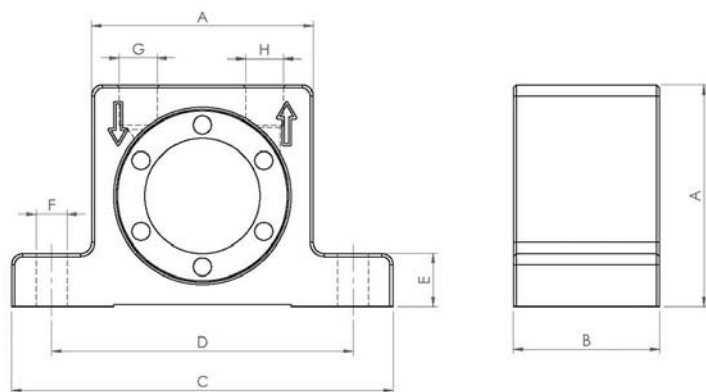
Surface-hardened aluminium end plates

12 with left-hand thread

13 with right-hand thread



### DIMENSIONAL SPECIFICATIONS



	mm	inch
A	100	3,94
B	73	2,88
C	160	6,30
D	130	5,12
E	20	0,79
F	11	0,43
G	G 3/8"	G 3/8"
H	G 3/8"	G 3/8"
	kg	LBS
Vibrator weight	2,3	5,111