

Internal piston vibratortype FP25L EX

CE EX II 2 G/D c T6 T85°C

Description:

Pneumatic piston vibrators for linear vibration with unlimited fine-tuning facilities for amplitude and frequency. Wide range.

ACBMV B. CASADIO VIBRATION
Z.I. Mi-Plaine
51 Rue Ampère
B.P. 31
69682 CHASSIEU CEDEX (FRANCE)
Tel.: 04 78 90 87 87 / Fax.: 04 78 90 87 88
Email: vibrateur@orange.fr
Internet: acbmv.com

VIBRATING AND PNEUMATIC CHARACTERISTICS

	2 Bars/29 PSI	4 Bars/58 PSI	6 Bars/87 PSI
Frequency (RPM)	2400	3100	3700
Force (N)	186	392	594
Force (LBS)	41,89	88,29	133,78
Air cons. (l/min)	18	62	93
Air cons. (CF)	0,64	2,21	3,32

Typical applications:

- Driving conveyor and discharge chutes
- Loosening or compacting of bulk materials
- Starting up of mechanical processes
- Filling facilities

Construction:

Aluminium housing surface-hardened and corrosion-resistant

Properties:

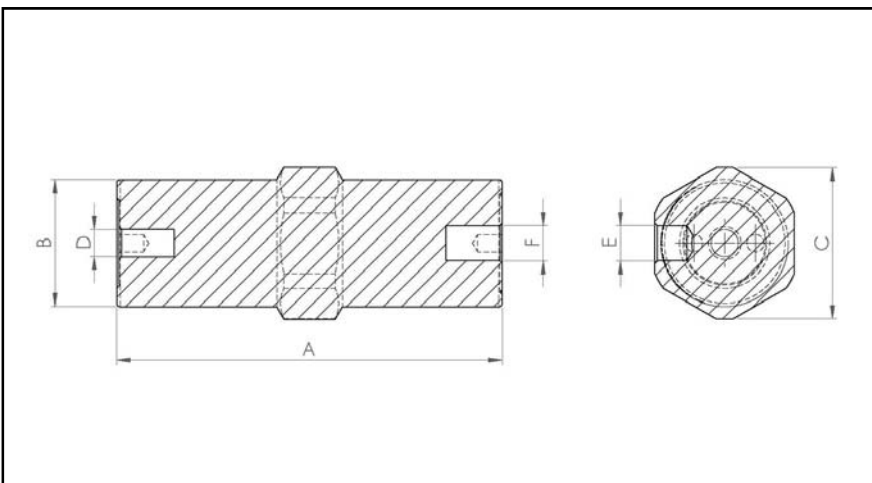
- Quiet and efficient
- Nominal frequency 2400 – 3700 strikes/min
- Centrifugal force 186 – 594 N
- Frequency and amplitude can be regulated
- Can be used at temperatures up to 150°C
- Resistant to extreme environmental conditions
- Extremely low noise level



Design:

Housing made from hard-anodized aluminium alloy
Piston made from leaded-bronze
Steel spring starting device
Sound-absorbing air outlet system
Hard anodized aluminium base
Threaded insert for mounting purposes

DIMENSIONAL SPECIFICATIONS



	mm	inch
A	136	5,36
B	48	1,89
C	53,5	2,11
D	M12	M12
E	G 1/8"	G 1/8"
F	G 1/8"	G 1/8"

	kg	LBS
Vibrator weight	0,79	1,756
Housing weight	0,5	1,111
Piston weight	0,29	0,644

This datas and outline drawings of this technical sheet are the property of ACBMV company. Don't reproduce or copy without authorization. This datas and outline drawings are intended to depict overall dimensions and do not necessarily represent the machine exterior. Information contained herein is subject to change without notice.